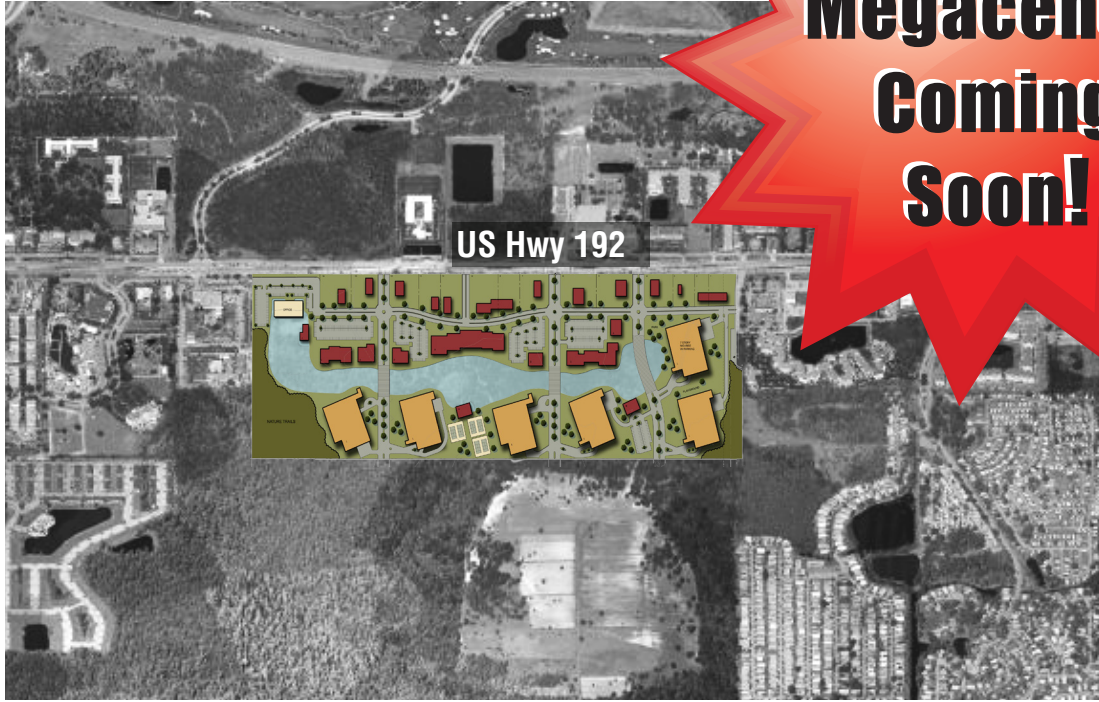


Coming Soon!

Outparcels For Sale or Lease

Magic Place - Kissimmee, FL

CREC
www.crec.com



**Megacenter
Coming
Soon!**

LOCATION

US HWY 192
Kissimmee, FL 34747



FEATURES

- Retail / Residential Megacenter.
Another Magic Development
- Phase I - five (5) outparcels .5 - 2.0 acres fronting US Highway 192 expected completion 3rd quarter 2016
- Phase II - IV features +200,000 sf of in-line retail space and additional outparcels
- Tourist corridor
- Six (6) high-rise condo/time share planned directly behind the retail corridor
- Build-to-suit parcels
- Multiple signalized intersections on Highway 192 providing outstanding access to the property
- Located in the "Entertainment Capital of the World"
- Close proximity to Walt Disney World, Universal Orlando, SeaWorld Orlando, and other attractions



2014 Estimates	3 Mile Radius	5 Mile Radius	7 Mile Radius
----------------	---------------	---------------	---------------

Population	20,908	65,843	158,494
Average HHI	\$59,375	\$56,988	\$56,651
Median Age	32	32	35
Daytime Population	31,087	87,910	180,011

For Additional Information

Nathan Cutchin, Senior Leasing Associate
407.472.2732 f: 407.895.0699
ncutchin@crec.com

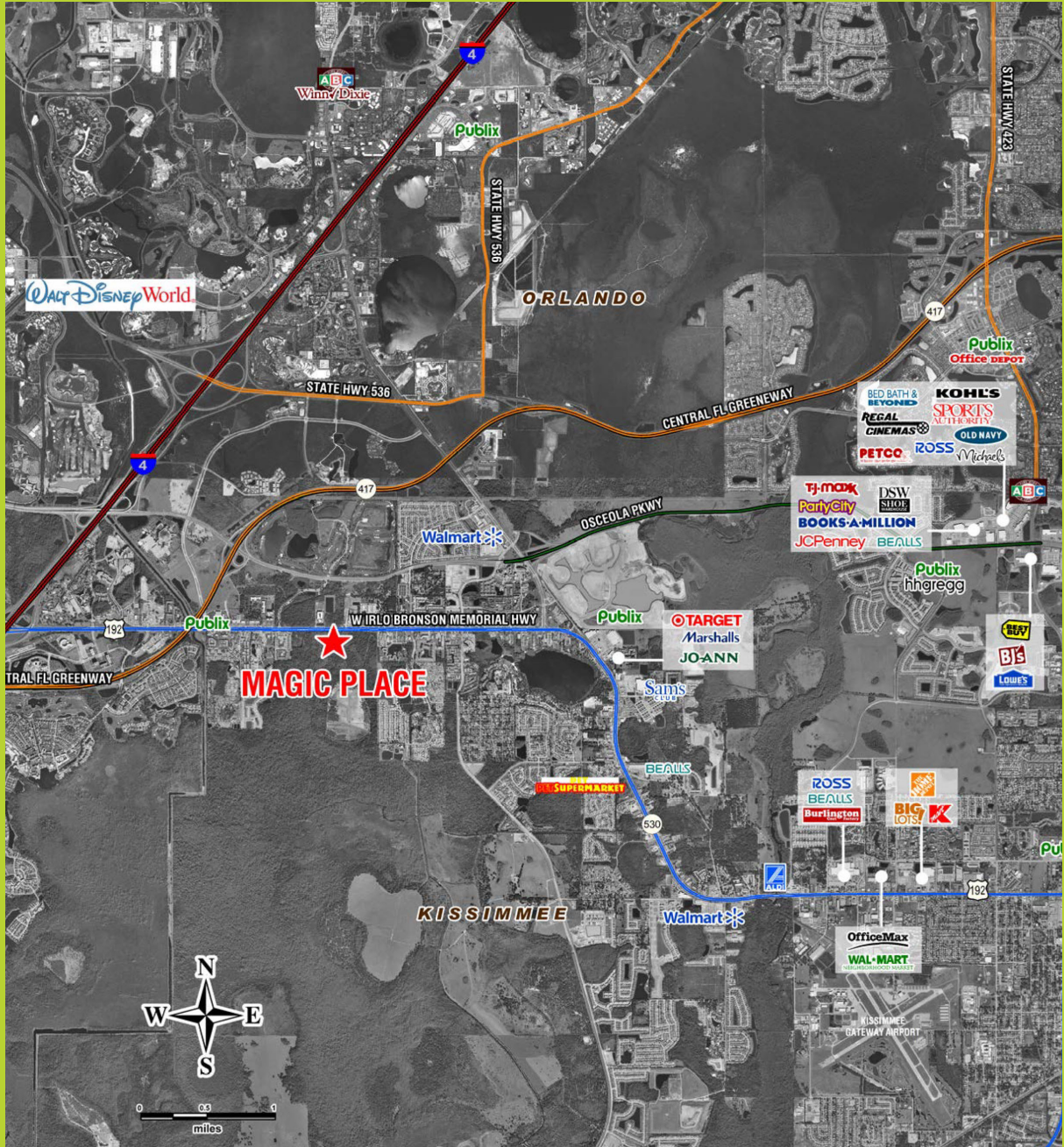
Joshua Busby, Vice President
407.472.2732 f: 407.895.0699
jbusby@crec.com

Continental Real Estate Companies

250 International Parkway
Suite 250
Lake Mary, FL 32746
407.472.2732 f: 407.895.0699
www.crec.com



Magic Place - Kissimmee, FL



> AREA RETAILER MAP



CREC. Your Florida Partner.
1.888.488.CREC www.crec.com