

COVER STORY

MEET THE MENTORS

This year's Mentoring Monday event included over 60 mentors from all types of business.

CATHY BAIER | US Federal Properties Co., owner

Cathy Baier is the owner and principal of US Federal Properties. USFP is an innovative and dynamic real estate firm that develops, finances, owns and manages properties predominantly to the federal government. USFP specializes in the development of high-security federal buildings throughout the country using proprietary development and management techniques. During the past 25 years, USFP has developed more than 24 federal lease buildings nationwide the country totaling more than \$400 million.

JERI BARTUNEK | Bartunek Group Executive Recruiting, managing partner

Jeri Bartunek is owner of Bartunek Group Global Recruiting & Staffing. For 26 years, the company has provided outstanding support to customers and candidates to understand their requirements and identify talent that meets their goals. Placements are retained at their new employment an average of six years. The company specializes in IT, telecom and engineering, and works with recruiters nationwide who are experts in biomedical, electronics, sales, pharma, gas and petroleum, and health care to support customers' requirements.

MARY BIRCH | Lathrop & Gage LLP, government relations coordinator

As Lathrop & Gage's government relations coordinator and chairwoman of the firm's government relations practice area, Mary Birch tracks issues and developments that may affect businesses on the local, state and national levels. She consults with clients about how they may participate in the decision-making process. Birch is not an attorney, but as the head of the government relations department, she works for strategic solutions and to help clients get the best Lathrop & Gage attorney for their issue.

THERESA BISHOP | Fidelity Investments, VP senior branch office manager

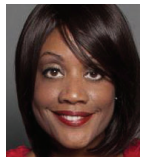
In her current role, Theresa Bishop leads a team of at Fidelity's Overland Park Investor Center, offering guidance and investment planning to



customers, including one-on-one investment guidance, wealth management, retirement planning, income strategies and college planning services, as well as integrated employee benefits solutions. She is responsible for creating and implementing strategies to develop business opportunities in the region and ensure that her team provides exemplary client service to customers.

MARY BETH BLAKE | Polsinelli PC, senior partner

Since first practicing law, Mary Beth Blake has devoted her practice to health care issues. A diverse mixture of clients — including physicians, institutions, managed-care companies, home-health agencies and laboratories — call on Blake for guidance and representation. In addition to managing physician and facility transactions and representing individuals before hearing panels and professional boards, clients consult Blake regularly on business planning, risk management and contracting issues.

ANGELA BROWN | Empowering Actions LLC, founder and president

Angela Brown is president and CEO of Empowering Actions LLC. The company provides sales performance and leadership development training and consulting to organizations wanting to drive revenue through increased sales and leadership performance. Brown is a John C. Maxwell-certified international leadership coach, speaker and trainer. Brown has trained more than 2,100 business owners and sales executives in the U.S., Canada, Puerto Rico and Australia, teaching sales and leadership skills.

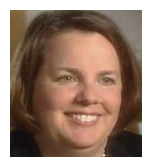
LeANN CARLSON | Lauren's Hope Medical ID Bracelets, owner and CEO

LeAnn Carlson owns and manages Lauren's Hope, a company founded in 2001, instantly creating an entirely new market segment in the medical ID jewelry industry: stylish, functional, high-quality, interchangeable medical ID bracelets. Lauren's Hope was born of the need of a shy 13-year-old girl with diabetes

whose mother wanted to ensure that her daughter had a medical ID bracelet she would actually wear. At the time, Carlson was selling custom jewelry and personalized kids' gifts at craft shows and thought of this mom's request as a special order.

MARCI CARRIS | Sprint Corp., senior VP customer management

Marci Carris is senior vice president of customer management for Sprint. She is responsible for postpaid and prepaid customer-care operations, planning and delivery; call center management; collections, payment operations and fraud; customer experience improvement and call volume optimization; and call center efficiency. Her 15 years at Sprint include several executive positions in customer finance services, within the finance and customer management organizations.

JOAN COHEN | JKC Consulting, owner

Leveraging proven leadership success in operations, finance and business transformation, senior-level executive Joan Cohen understands the key business drivers crucial to helping companies achieve revenue, profit and performance objectives. She also understands how to move organizations forward, achieve cultural transformation and effectively guide companies through challenging turnaround, expansion, merger, acquisition and disposition environments.

SARA CROKE | Weather or Not Inc., president and founder

Since 1986, Weather or Not has minimized safety and financial consequences for businesses such as KCP&L, KCI Airport, the Kansas City Royals, Sporting Kansas City and Boeing, along with municipalities, schools and outdoor recreational venues. Sara Croke has turned the challenges of running a 24/7 center with highly skilled meteorologists into a profitable business that dominates the Midwest. This has given her many interesting business, weather and emergency management stories.

LORI DEAN | Dean Machinery Co., former chairwoman and CEO

Lori Dean was chairwoman and CEO of Dean Machinery Co., a Caterpillar dealership, until 2012 when it was sold. Dean's four revenue producing divisions were responsible for the sale, rental, repair and support of heavy equipment and engines in the construction, industrial, on-highway and agriculture markets. Currently, she serves as an advisory director (and former director) to the Bank of Kansas City and the Rehabilitation Institute of Kansas City. She is also on the auction committee for Operation Breakthrough's annual fundraiser.

CHRISTINE DeMAREA | Husch Blackwell, partner

Christine DeMarea is a partner at Husch Blackwell LLP, focusing her practice on private wealth. With an undergraduate degree in finance economics, an LLM in taxation and more than two decades of experience, DeMarea is well-versed in legal and monetary matters. While in law school, she formed and operated a business, gaining a unique experience regarding planning and legal issues from a client's perspective. DeMarea is highly regarded in the areas of business and estate planning and charitable planned giving, with experience litigating complex trust and tax matters.

JULIE DONELON | MOCSA, president and CEO

Julie Donelon has worked in the field of child abuse and sexual violence for more than 20 years. For the past three years, she has been president and CEO of the Metropolitan Organization to Counter Sexual Assault (MOCSA), a rape crisis center providing services to children who have been sexually abused, adult survivors of child sexual abuse and survivors of sexual assault. MOCSA reaches more than 55,000 people every year through 24-hour crisis line services, advocacy services, counseling and prevention education programs.

ANISSA ELSEY | Nazdar, VP of human resources

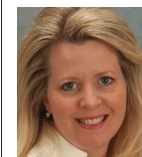
Anissa Elsey is vice president, human resources for Thrall Enterprises Inc., where she is responsible for the oversight



and leadership of the human resources functions of all TEI operating companies, including Nazdar and Graphic Solutions International. Her HR oversight extends to approximately 600 employees throughout the United States, Mexico, Central America, Latin America, Europe and Asia. She has 20 years of diverse experience in HR.

LINDA ENDECOTT | Olin Business School, managing director, Executive MBA program

Linda Endecott joined Olin Business School's Executive MBA program as managing director for the program's Kansas City campus in June 2014. In this role, she engages the greater Kansas City region and its business community to build collaborative partnerships that support talent development and executive education. In addition, she focuses on identifying and developing relationships with some of the best talent in the region with the goal of keeping leaders in Kansas City to earn a top-tier Executive MBA.

KAREN FENAROLI | CBIZ, vice president

As an executive search partner, Karen Fenaroli offers a 25-year portfolio of broad-based executive experience ranging from her tenure as an entrepreneurial CEO of a global wholesale manufacturer of luxury apparel lines to an M&A consultant for a Fortune 100 company to a CPA inside one of the Big 4 international public accounting firms. As a senior vice president for EFL Associates, she specializes in C-suite, VP roles and board placements in a variety of commercial business and industrial companies in growth mode.

KIERSTEN FIRQUAIN | InHome Bistro Catering, owner

Kiersten Firquain, or "Chef K," began her culinary career caring for kids in early education. After seeing their love for cooking, she developed a business model and started Bistro Kids Creative Cooking Series. She annually attends culinary school training at the Culinary Institute of America in the Napa Valley region of

COVER STORY

St. Helena, Calif., and in 2004 began InHome Bistro Catering Service. In August 2006, she rolled out Bistro Kids Farm 2 School Lunch Program, an innovative take on serving students healthy, locally sourced meals.

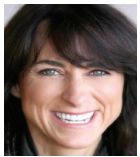
JO ANNE GABBERT | Core Catalysts LLC, EVP corporate development



Jo Anne Gabbert, a Kansas City native, started her career in St. Louis with Southwestern Bell as an

information technology analyst. In 2014, Gabbert joined Core Catalysts as executive vice president of corporate development. The management consulting firm provides process improvement, revenue enhancement, enterprise risk management, strategic planning and business performance. She currently serves on the boards of United Way and the Boys and Girls Clubs of Greater Kansas City.

GAIL WORTH | Gail's Harley-Davidson, owner



Gail Worth is president and owner of Gail's Harley-Davidson in Grandview. She bought the dealership

in 2000, becoming one of a limited number of women Harley-Davidson dealership owners in the country. The business is privately owned and is recognized as a top dealership in the country and the largest Harley-Davidson dealership in the Midwest. Gail has been active in the Harley-Davidson business since high school, learning all phases of the day-to-day operations and assuming a variety of key positions before buying her store.

JANIE GAUNCE | Grapevine Designs, president



Janie Gaunce started Grapevine Designs, a promotional marketing agency, in 2000.

In her prior life, Gaunce enjoyed a 13-year successful career as VP/sales for two Kansas City radio stations. After radio, Gaunce discovered the creative and fun world of promotional marketing in 1996, forming her company Grapevine Designs four years later. Grapevine Designs was honored among the "Best Places to Work" by the *Kansas City Business Journal* in 2007, consistently ranks as one of the top "Women-Owned Businesses in KC" by the KCBJ and has earned eight top industry awards in the past two years from PPAI for outstanding client work.

COURTNEY GODDARD | Park University, vice president and general counsel



Courtney Goddard is vice president and general counsel at Park University. Before joining Park in 2007,

Goddard represented colleges and universities nationwide in a private legal practice focusing on higher education. Goddard received an undergraduate degree in criminology from Florida State University and a law degree from the University of Missouri. Goddard is recognized nationally as an expert in the field of higher education law and regularly speaks on topics such as Titles II, VII and IX compliance as well as student disability compliance and institutional risk management.

JENNY HAILE | Tri-Ten Consulting, CEO/founder



Jenny Haile has focused her career on serving clients through a holistic approach to business, technology

and individual strategies. She brings that approach to her company, Tri-Ten Consulting, as founder and CEO. Her management consulting services are based on the belief that a company's success is secured through dedication to a business strategy, execution of the systems and workflow supporting the core business, as well as the individual's and team's motivations/abilities to adapt.

JEAN HANSEN | Kansas City Internal Medicine, CEO



Jean Hansen is CEO of Kansas City Internal Medicine. She holds a bachelor's degree in

organizational management leadership, an MBA and is a fellow in the American College of Medical Practice Executives Kansas City. Hansen is responsible for the strategic planning and day-to-day operations of the practice and together with her team uses a patient-centered focus for decision-making and practice operations.

DAVY HARTMAN CAMPBELL | Fulfillment Plus Inc. & Events Plus, president/owner



Davy Hartman Campbell started Fulfillment Plus, a marketing services company, 13

years ago after realizing that the fulfillment needs of businesses and nonprofits are often unmet. As such, she has been honored by the *Kansas City Small Business Monthly* as one of the top 25 companies in Kansas City with

under 25 employees. In 2005, Campbell was accepted into the Helzberg Entrepreneurial Mentoring Program. In 2006, Campbell started Events Plus, an event management company as an outgrowth of Fulfillment Plus.

KATHERINE HUNTER | Bank Midwest, senior vice president



Kathy Hunter is a 30-year banking executive who is well-versed in commercial and small business

products and services with expertise in delivering creative solutions that match customer wants and needs. She is team-oriented with a talent for surrounding the customer with subject matter experts so that they can focus on their business versus their banking needs. She is an avid learner with a proactive attitude and a management style that focuses on team success.

STEPHANIE ISAACSON | New Horizons Enterprises LLC, owner/president



Stephanie Isaacson launched New Horizons Enterprises LLC in 2007 with a vision of serving

clients with innovative, cost-effective solutions to address her clients' environmental challenges. Isaacson's hands-on approach with clients gives them cost-effective solutions. Rather than rely on numerous subcontractors to perform fieldwork, asbestos removal and other services, New Horizon's gives clients "360 degrees of support" by managing projects from planning to implementation.

CHRIS JACKSON | NCES Inc., CEO



After 22 years of experience in operations and management, Chris Jackson entered the entrepreneurial

world when she acquired NCES in 2000. NCES is a mail-order and online resource for nutrition education products that includes books, DVDs, teaching aids and other learning tools. Through NCES, Jackson helps educate dietitians, health care professionals and teachers about nutrition and good health, all subjects consistent with her lifestyle.

SHEREE JOHNSON | SJ Insights LLC, CEO



Before founding SJ Insights in 2013, Sheree Johnson held senior-level management positions with

top Chicago- and Kansas City-area advertising agencies, including Nicholson Kovac, Cunningham & Walsh and

McCann-Erickson. SJ Insights is a marketing services firm providing market intelligence and analysis, custom market research, media planning and buying services, social media marketing, as well as advertising-related consulting services. She serves on the marketing committee for Starlight Theatre and co-chairs the marketing committee for Community LINC.

LAURA LEE JONES | LionShare, founder and CEO



Laura Lee Jones, CEO and president, founded LionShare in 1995. She is a graduate of the

University of Wisconsin and has dedicated her 29-year career to health care analytics and marketing. Together with her "Best Places to Work" award-winning team, LionShare has achieved national recognition as a leading health care firm. LionShare has guided hundreds of hospitals in their quest to link data analytics to decision insights, better outcomes and marketing execution with the use of DIATA — LionShare's business intelligence and CRM platform.

ELAINE KOCH | Bryan Cave LLP, partner



Elaine Koch has more than 30 years' experience as a trial lawyer. Her practice focuses primarily on employment

litigation, civil rights litigation and business torts, in addition to counseling clients on employment issues. She has tried a wide variety of jury trials in state and federal court. She has also tried arbitrations, bench trials and the largest individual taxpayer case in the history of the U.S. Tax Court.

DENISE KRUSE | AdamsGabbert, CEO/owner



Denise Kruse is CEO and majority owner of AdamsGabbert. Founded in 1999, AG is a WBE

headquartered in Overland Park with an office in St. Louis. AG specializes in improving business and IT strategy and operations of clients in the areas of people, process and systems. It provides strategic planning and execution, business process improvement and project/program management. AG delivers these solutions through consulting and recruiting divisions, which includes contract staffing, contract-to-hire and direct hire in these same specialty areas.

MARY LEONIDA | Polaris Cos. and Track Consulting, president and CEO

As CEO and president of the Polaris Cos. and Track



Consulting, Mary Leonida manages closely held corporations with direct ownership in a regional management

consulting firm, commercial real estate, startups and multi-unit national franchise restaurants. For more than 20 years, Leonida has generated business plans, evaluated asset allocation and developed marketing and expansion strategies for core businesses. Her consulting work specializes in strategic planning, entrepreneurial management and forensic accounting.

LIZ LEWIS | Commerce Bank, vice president - commercial line of business



Liz Lewis is responsible for overseeing marketing, strategic planning, sales training and

specialty lending programs for commercial banking activities throughout Missouri, Kansas, Illinois, Oklahoma and Colorado. She is actively involved with various charities in the Kansas City area. She graduated with a degree in economics from the University of Missouri.

CHRISTINA LONG | hr-haven, HR insourcing director



Christina Long is an HR insourcing director and community relationship builder with hr-haven. Forget

traditional HR: hr-haven creates real-time human resources solutions for companies and helps grow businesses from the inside out. Clients recognize the value of a great business culture and are willing to invest intention and effort to achieve it. As a result, they achieve great people results, cultural competitive advantage and highly personalized human resources programs by focusing on three simple areas: culture, leadership and strategy.

JAMIE LOUD | Clayman Promotional Group, CEO



Jamie Loud's business career began in 1991 at Clayman Promotional Group (formerly Alvin M. Clayman

Enterprises), a successful business founded in 1968 by her father, Alvin Clayman. In 2007, Loud assumed more than 51 percent of the company stock and pursued and received WBE (woman-owned business) certification status. She now is the second generation running this company. In 2012, Loud obtained 100 percent of the company stock, becoming the sole owner and CEO. Currently, Clayman Promotional Group is ranked in the top 50 in its industry.

COVER STORY

CONTINUED FROM PAGE 13

LORI MALLORY | Humana, VP provider development - central region

Lori Mallory's position allows her to work with platform medical groups, including private practices, independent

physician organizations, Accountable Care Organizations (ACOs) and hospitals on optimizing population health management to Humana members. Before beginning at Humana, Mallory's leadership as CEO of Kansas City Internal Medicine provided her with the opportunity to serve Kansas City and focus on what she loves the most — bringing together a community to ensure it has the best health care delivery possible.

PATRICE MANUEL | P/Strada LLC, senior principal

P/Strada was established in 2001 by its owner and executive director, Patrice Manuel. She is a retired

military officer with more than 20 years of experience in project management and organizational development. Manuel is a certified project management professional with the Project Management Institute and has a bachelor's in chemistry, a master's in science administration and is ABD in a Ph.D. in organizational management and leadership development.

LAURA MAVER WARD | Kingsbridge Capital Partners & Dovetail Business Advisors, founder and CEO

Laura Maver Ward, founder and CEO of Kingsbridge Capital Partners and Dovetail Business

Advisors, is an accomplished entrepreneur and businesswoman with 35 years of experience in mergers and acquisitions, management consulting, executive coaching, manufacturing and business services. During the course of her career, Ward has advised hundreds of business owners on mergers and acquisitions, financial advisory issues and business growth strategies.

MAUREEN MCANARNEY | VSR Financial Services, co-president

Maureen McAnarney joined the firm in 1992 after graduating from the University of Kansas

with a bachelor's in business communications. She has worked in many areas of the

firm, including rep transition and marketing and has been head of the registered investment adviser and fee-based activities for five years. She was named as vice president in 2001 and was elected to the board in 2002. In 2005, McAnarney was named as VSR's chief operating officer. In June 2011, she became co-president.

VALERIE MCCAW | VSM Engineering LLC, president

VSM Engineering has left the startup phase and is now in the growth phase. Starting a business was

a challenge for Valerie McCaw, but she overcame that by doing two things. First, she decided to "do one thing every day" to develop the firm no matter how she felt. Second, she took a FastTrac NewVenture class. This year, VSM is starting its 12th year in business. Running a business and making a profit is like a marathon, but it lasts longer. Big unexpected challenges pop up, and as the owner, you must confront and conquer them.

CHERYL MCCONNELL | Rockhurst University, dean, Helzberg School of Management

Cheryl McConnell is dean of the Helzberg School of Management at Rockhurst University.

In her role as dean, she has overseen significant growth in all graduate degree programs, increased non-degree offerings in emerging interest areas, and increased engagement with the business community and regional organizations. Before becoming dean, McConnell was a professor of accounting, faculty chair of the Helzberg School of Management and chair of the Rockhurst University Faculty Senate.

MIRA MDIVANI | Mdivani Corporate Immigration Law Firm, corporate immigration attorney

Mira Mdivani is immigration law counsel to U.S. and multinational corporations, providing advice, representation,

immigration compliance audits and training. Mdivani represents employers in IT, engineering, food processing, construction, manufacturing, insurance and banking to ensure corporate immigration compliance and availability of visas for U.S. employers' international personnel.

KAREN MILLS | PNC Bank, vice president, process improvement manager

Karen Mills joined PNC Bank in Pittsburgh in 1992. While at PNC, Mills worked in several areas of the company, including real



estate, finance and technology. She is currently working on several business-led initiatives involving

technology and business process improvement for PNC Real Estate. Mills has managed teams in several technology disciplines, including project management, software development, business systems analysis, business process analysis and document management.

BROOKE MOREHEAD | Prairiebrooke Arts, owner and president

Brooke Morehead has been selling artwork for more than 30 years. Morehead started Prairiebrooke Arts Inc. in

1990 doing corporate art design. In 1997, Morehead opened Prairiebrooke Gallery in downtown Overland Park for residential fine art and framing. Since that time, Prairiebrooke Arts has established itself as a regional leader in original art and framing services with clients such as Cerner Corp., JPMorgan, Saint Luke's Health System, the U.S. Army, Burns & McDonnell and Waddell & Reed Financial Services.

ALANA MULLER | Coffee Lunch Coffee, networking speaker, coach

Alana Muller is a corporate networking coach, workshop facilitator, keynote speaker, lecturer and

author of the book, "Coffee Lunch Coffee: A Practical Field Guide for Master Networking" and a companion blog, CoffeeLunchCoffee.com. Her approach is accessible, relevant and immediately actionable professional networking for those interested in connecting with others, getting involved in their community, seeking to advance their career or looking to build social relationships. Muller has helped thousands of people formulate a strategic mind-set around networking while creating a game plan to get out there and connect.

JULIE NELSON MEERS | Missouri Bank, senior vice president

Julie Nelson Meers has been in the Kansas City banking community for more than 26 years, 18 of

those with Missouri Bank. During that time, she has earned a reputation as an advocate and financial educator for small business and entrepreneurs. Meers has shared her expertise with many in the Kansas City community, serving on numerous boards and committees and as a frequent

guest speaker on all things entrepreneurial, banking and financial.

GAYLE PACKER | Terracon, chief administrative officer

M. Gayle Packer is an executive vice president and chief administrative officer for Terracon, a

position she has held since January 2012. Packer joined Terracon in 2004 as an attorney. Packer was promoted in 2005 to co-general counsel and corporate secretary. In 2008, Packer was named as the director of corporate services. In addition to managing the corporate services office, Packer facilitates Terracon's acquisition program. Since 2005, she has coordinated integration of 23 acquisitions with 55 new offices into Terracon.

PATTI PHILLIPS | NACWAA, CEO

Patti Phillips is known for her authenticity, charismatic leadership and her tireless commitment

to women's advocacy and leadership development. She believes there are no limits on what individuals can achieve and personally lives it. Part of her job, and her passion, is to coach women to pursue their potential and their dreams. She is also a well-known keynote speaker on topics such as leadership, teamwork, culture and potential. She gave a Tedx Talk in 2014 on the topic of potential.

PAMELA POPP | Lockton Retirement Services, president

Pamela Popp is responsible for strategic growth of the Retirement Practice at Lockton. She specifically

focuses on building tools and services that address plan sponsor needs in a rapidly changing retirement landscape, including addressing participant retirement readiness, plan sponsor regulatory compliance, investment menu design and management, and overall optimization of retirement plan delivery. With more than 25 years in the retirement and asset management business, Popp's roles have always focused on innovation and high-quality client service delivery.

MARY REDMOND | The FearLess Negotiator LLC, speaker, author, consultant

As a professional speaker, Mary Redmond's audiences retain her for their conference keynotes

and workshops because her

negotiation stories are sprinkled with humor from the negotiation trenches. Her keynotes touch hearts and help others confront and overcome their challenges. Redmond shares her personal struggles with addiction and a traumatic brain injury. She is particularly passionate about helping women become more confident when speaking out, asking for what they need and negotiating from a position of strength in business and in their personal lives.

CINDY REYNOLDS | Somerset Ridge Vineyard & Winery, owner

Cindy Reynolds and her husband, Dennis, planted Somerset Ridge Vineyard & Winery in 1998 while

Reynolds was managing sales organizations for several national technology and media companies and consulting for companies preparing to sell. She left the corporate world five years ago to focus her energy on her family winery. Somerset Ridge is an award-winning producer of premium wines made from grapes grown in their 20 acre vineyard and surrounding area. Their grapes are grown in the unique limestone hills in and around Somerset, Kan., and are hand-picked each harvest season.

JONI ROGERS | Olathe Medical Center Home Health, physical therapist

Joni Rogers started a successful wholesale ladies accessories business out of her garage. With

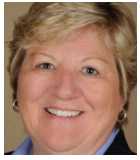
hard work, perseverance and a dedication to amazing customer service, the business quickly flourished and outgrew the home office. Featured in national fashion magazines, shipping to all corners of the U.S., Canada and Australia and constant trade show presence, the business grew to be very successful. She now works in the health care industry.

CICI ROJAS | Central Exchange, CEO

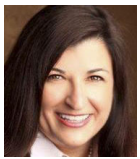
CiCi Rojas was named as president and CEO of the Central Exchange in 2013. In her role, she provides

vision, voice and operational oversight for the 1,000-plus members representing a cross-section of women and men from throughout the Kansas City area. Rojas most recently was vice president of community engagement for Truman Medical Centers in Kansas City. Before joining TMC, Rojas served various communities in the business and political advocacy arenas.

COVER STORY

SANDY SAMPSON | Hays Cos. of Kansas City, president/CEO

Sandy Sampson is president of Hays Cos. Kansas City and has direct responsibility of the property and casualty practice. Her responsibilities include sales development, personnel management, client program development, and design, marketing and placement of appropriate insurance coverage and consultation. Sampson joined Hays in 2001. Before joining Hays, Sampson was a senior vice president of Aon Risk Services of New Jersey, Pennsylvania and New York.

SHEILA SECK | Seck & Associates LLC, owner

Sheila Seck is managing partner of Seck & Associates, a boutique law firm that assists entrepreneurs

as they launch their business and encounter change as they grow. Seck works closely with growing companies, established businesses and investors to develop solutions to a broad range of challenges, with a specialty in assisting business owners and companies as they prepare to sell their business or acquire new ones. Seck is a member of the board of Alphapointe, a not-for-profit focused on providing services and jobs for blind and visually impaired people in the Kansas City area.

RACHEL SEXTON | VPR Cos., COO

As a graduate of the University of Missouri's journalism program, Rachel Sexton spent the first part of her

career developing marketing campaigns for pharmaceutical clients as the creative director of VPR Creative Group. After more than a decade designing product launches for blockbuster drugs like Allegra and Lantus, Sexton reinvented VPR's business to focus on what was really important to pharmaceutical clients — the patient. Sexton started VPR Patient Outreach Program in 2010 and experienced 43 percent growth in the first year.

ALISON SHEEHAN | PGI, senior vice president, human resources

Alison Sheehan is responsible for PGI's global human resources management. She leads a global team of

HR professionals that provides support and services to more than 1,800 PGI associates worldwide. She is responsible for PGI's global strategies for talent acquisition, performance

management, compensation and benefits, and she plays a key leadership role in developing and supporting PGI's corporate culture initiatives. Sheehan has dedicated her entire career to human resources.

SHERIDAN SHENE | Flourish Promotions Group, founder

Sheridan Sechter Shene is CEO of Flourish Promotions Group and past founder and publisher

of *Flourish! Magazine*, a publication established in 2003 and editorially focused on supporting and promoting Kansas City's community of professional women. Shene is a past president of the Kansas City chapter of the National Association of Women Business Owners (NAWBO). She has been a member of the Central Exchange since 2004 and was elected to the board in 2007 for a three-year term.

BETH SOUKUP | JE Dunn Construction, CFO

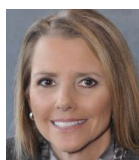
Beth Soukup became CFO of JE Dunn Construction in June 2014. Before JE Dunn, Soukup was a

partner with McGladrey LLP. Soukup is on the executive committee and board of Kansas City Area Development Council, Junior Achievement of Middle America and the Association for Corporate Growth.

MARGA SPANGLER | First National Bank, director, private client services - Kansas market

Marga Spangler is director, private client services for First National Bank. She has more than 35 years

of banking experience, and in her current role she works with a team of professionals to deliver financial solutions tailored to the needs of affluent clients. Spangler has been successful in developing lasting client relationships by understanding their unique and changing needs. She leads a team of experts in financial planning, private banking, trust and investment management to coordinate all aspects of a client's financial life.

ROBIN STERNECK | Sterneck Capital Management, co-founder

Robin Sterneck has spent her 30-year career in financial services and business leadership. As a principal at

Sterneck Capital Management, she brings the firm's strong financial planning and investment skill set to clients nationally. Her belief is that

hard-working women want their money working hard for them. During her 15-year tenure in investment banking at Lehman Brothers in New York, she specialized in the capital markets and municipal finance areas.

RENÉ STREET | ABWA National, executive director

René Street is executive director of the American Business Women's

Association, a national organization that champions the advancement of women in business. During the past eight years as executive director, she led the creation of the Women's Instructional Network, a comprehensive professional development and organizational resource for ABWA members. Recognizing the challenges of the current economy, Street has led the development of online courseware that helps women chart new paths in their careers.

PATSY STUKE | American Osage Consulting Inc., business consultant

Patsy Stuke started American Osage Consulting Inc. in 2002 (WBE, MBE & 8a) and

sold the safety and environmental consulting company in 2014. She has more than 30 years of management experience in private and public corporations. She is a highly effective communicator, trainer and business leader. Career highlights include entrepreneurial ventures in retail, real estate and business consultation. A true believer in corporate citizenship, she is an active mentor and leader in local and national business organizations, particularly those in support of women and Native Americans.

MELISSA STURGES | Sturges Word Communications Inc., principal

Melissa Sturges leads the strategic planning for numerous SWC clients, drawing on more

than 30 years of experience in public relations, including strategic planning, media/community relations, events, crisis management, service/product marketing and employee communication. She has executed crisis preparedness/risk management programs for dozens of companies and worked extensively with businesses in the development, financial, hospitality, manufacturing, medical, nonprofit, public utility and other sectors on crises pertaining to a wide variety of matters.

LORI TINKLER | Applied Measurement Professionals Inc., executive vice president and chief operating officer

Lori Tinkler is executive vice president and chief operating officer of AMP and the associate executive

director and chief operating officer of the NBRC. As chief operating officer of AMP, Tinkler is a key member of the management team and contracting officer, implementing strategic decisions, and creating and monitoring benchmarks for improvement.

JESSICA UNDERWOOD | Chief of Staff KC, president/owner

Jessica Underwood is a job market expert and a woman-owned business entrepreneur with nearly

10 years of experience in the staffing and recruitment industry. In 2011, Underwood founded and launched Chief of Staff KC, a staffing solutions company for the modern office. As a woman-owned, family business, Chief of Staff focuses on placing high-quality candidates in today's office cultures. The company has carved out a focus on developing a personal and approachable appeal to millennials and the companies that are searching to hire the next generation of the workforce.

CAROLYN WATLEY | CBIZ Benefits & Insurance Services Inc., president

Carolyn Watley is a graduate of Benedictine College in Atchison and earned a bachelor's in

business administration. Her career began with Robert D. O'Byrne and Associates in 1977. CBIZ acquired that firm in 1997, and Watley was appointed president of the Kansas City Employee Benefits Practice in 2000. She has participated in numerous speaking engagements on employee benefit issues and has been a presenter or panelist at many women's forums on issues related to career success and advancement.

COLLEEN WHITE | Strategic Workplace Solutions Inc., president

Colleen White brings 30 years of labor law compliance and workplace relations

experience to her SWS clients to assist with learning about and managing their compliance risks, thereby reducing or eliminating penalties from violations. She

derives her extensive experience from more than 12 years as director of Missouri's Division of Labor Standards. Before that, she was business manager of a construction trade union in Kansas City, becoming the first woman on a Building & Construction Trades Council in the U.S.

AMY WINGER | VML, chief strategy officer

As chief strategy officer, Amy Winger's role is to reframe traditional planning and strategy, looking

at it through a digital and technology lens. Under her leadership, VML has assembled a talented and diverse team of experts who combine consulting with insights and brand planning to develop strategies that impact businesses and their consumers. Winger cut her teeth in the dot-com world of mid-'90s New York, working on the first generation of Web guides and community websites at Seth Godin Productions, Wolff New Media/YPN.com, New York Now and Snap.com.

CONNIE ZACK | Sunlighten Inc. & Sunlight Day Spa, owner

Connie Zack, co-owner of Sunlighten Inc., founded the business in a basement in

1999. Before Sunlighten, Zack held various sales and management positions at Procter & Gamble. In 2013, Zack was featured as one of Kansas City's most prominent female entrepreneurs by OneKC for Women. Sunlighten's headquarters is also home to the area's premium spa experience, Sunlight Day Spa. Clients can focus on holistic healing, with services revolving around rejuvenation and detoxification to help promote healthy living.

RONDA SHEA ZILLNER | Zillner, CEO/founder

Ronda Zillner, CEO, founded Zillner in 1992. With clients stretching throughout the

country and numbering in the hundreds, Zillner is recognized as a leading senior marketing firm. The company's 50 associates are dedicated to constantly developing and evolving market-based strategies, solutions and innovations that meet the aspirations, concerns and desires of seniors, resulting in measurable and profitable outcomes for client companies. Zillner knows that a one-size-fits-all message just doesn't work and will be even less effective as the senior population swells during the next 30 years.