



**CUSHMAN &  
WAKEFIELD**

FOR LEASE

# EastRidge at Perimeter Park

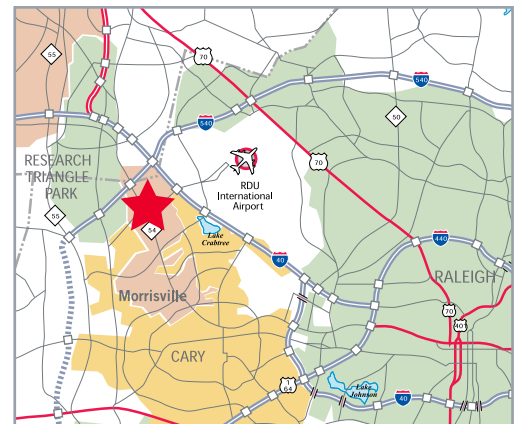
400 Perimeter Park Drive, Morrisville, NC 27560



## Property Highlights

<b>Available Suites:</b>	55,467 rentable square feet available January 1, 2017
<b>Location:</b>	Close proximity to Research Triangle Park and RDU International Airport, convenient to I-40, Highway 54 and Highway 70
<b>Lease Rate:</b>	\$12.50/RSF, Triple Net
<b>Building:</b>	Single Story Flex Building
<b>Amenties:</b>	Numerous banks and restaurants within one mile, park setting with professional landscaping
<b>Life Safety:</b>	Fully sprinklered
<b>Signage:</b>	Individual Signage Available
<b>TICAM:</b>	\$2.47 per square foot 2016 estimate

## Under New Ownership!



**Dennis D. Hurley, SIOR**  
Managing Director  
+1 919 791 2103  
dennis.hurley@cushwake.com

**Hillman C. Duncan, CCIM, SIOR**  
Managing Director  
+1 919 791 2105  
hillman.duncan@cushwake.com

**Patti Autry**  
Associate  
+1 919 791 2118  
patti.autry@cushwake.com

3015 Carrington Mill Blvd.  
Suite 410  
Morrisville, NC 27560  
main +1 919 789 4255  
fax +1 919 789 0268  
**cushmanwakefield.com**

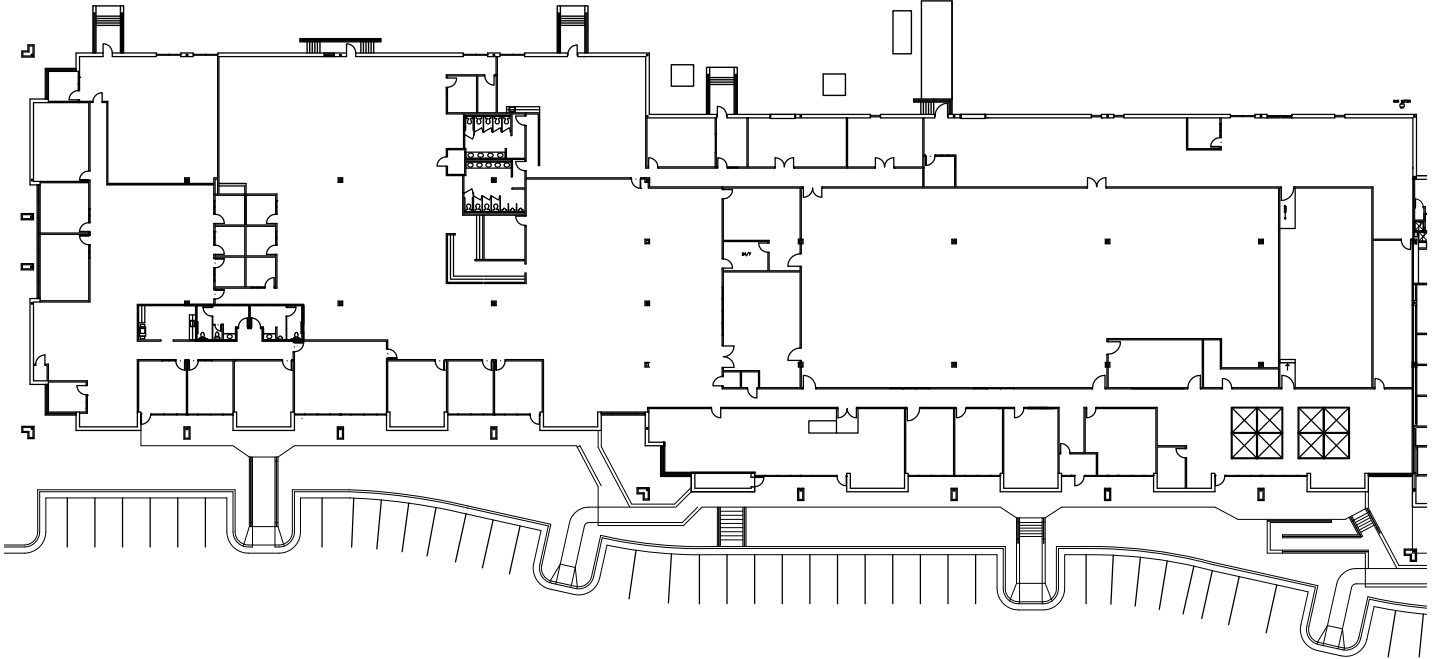


**CUSHMAN &  
WAKEFIELD**

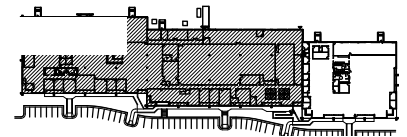
FOR LEASE

# EastRidge at Perimeter Park

400 Perimeter Park Drive, Morrisville, NC 27560



55,467 rentable square feet available 1/1/2017



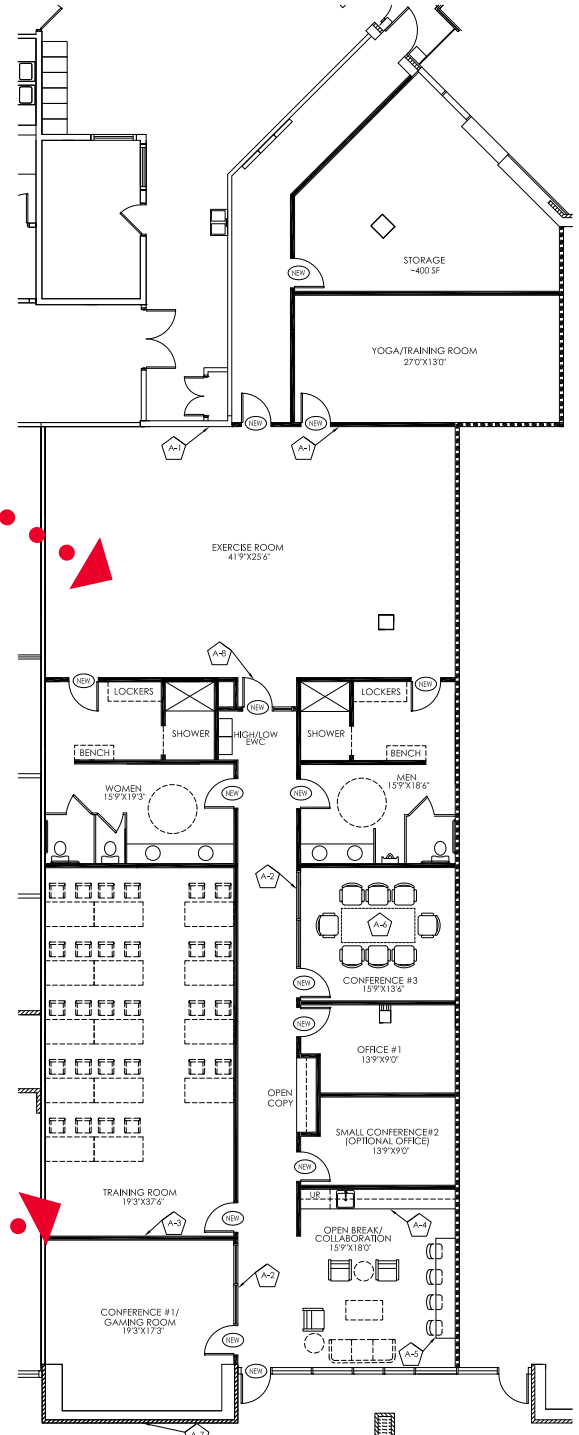


**CUSHMAN & WAKEFIELD**

FOR LEASE

# EastRidge at Perimeter Park

400 Perimeter Park Drive, Morrisville, NC 27560



## The Landing at 900 offers...

- Conference Rooms
- Gym/Locker rooms
- Break room
- Yoga/Training Room



These images are examples only.

**Dennis D. Hurley, SIOR**  
 Managing Director  
 +1 919 791 2103  
 dennis.hurley@cushwake.com

**Hillman C. Duncan, CCIM, SIOR**  
 Managing Director  
 +1 919 791 2105  
 hillman.duncan@cushwake.com

**Patti Autry**  
 Associate  
 +1 919 791 2118  
 patti.autry@cushwake.com

3015 Carrington Mill Blvd.  
 Suite 410  
 Morrisville, NC 27560  
 main +1 919 789 4255  
 fax +1 919 789 0268  
**cushmanwakefield.com**